

Whitakers

Estate Agents



104 Gillshill Road

, Hull, HU8 0LD

Offers In The Region Of £179,950



104 Gillshill Road

, Hull, HU8 0LD

Offers In The Region Of £179,950



Entrance

Via a glazed uPVC door which leads to the inner porch.

Hall

Via a uPVC double glazed door, the hall has the stairs to the 1st floor, original wood panelling to the walls, radiator and a storage cupboard.

Lounge

15'4" x 11'4" (4.690 x 3.471)

The spacious lounge has the original solid wood feature fireplace with inset flame gas fire, a radiator and uPVC double glazed bay window to the front aspect.

Dining Room

17'10" x 10'7" (5.451 x 3.248)

The dining room has a feature fireplace with inset electric flame fire, and uPVC double glazed window to the rear aspect.

Kitchen/Dining

18'4" x 7'9" (5.606 x 2.377)

The extended kitchen/dining has a range of base and wall units with sink/drain, plumbing for an automatic washing machine, and space for a gas cooker, and radiator. A uPVC double glazed window to the side and rear aspects, and door leading out to the rear garden.

Stairs to the 1st floor landing

With solid wood panelled walls and uPVC double glazed window to the side aspect, access to the loft space.

Bedroom One

15'3" x 10'10" (4.669 x 3.311)

The very spacious bedroom has a uPVC double glazed bay window to the front aspect, a radiator, and a range of fitted furniture.

Bedroom Two

13'2" x 11'6" (4.021 x 3.508)

Spacious, the second bedroom has a radiator, and uPVC double glazed window and built-in storage cupboard, the recently added, boiler in situ.

Bedroom Three

8'6" x 6'0" (2.616 x 1.835)

The third bedroom has a uPVC double glazed window and radiator.

Wc

With recently updated low level wc and uPVC double glazed window and wood effect flooring.

Wet/Shower Room

6'10" x 6'4" (2.087 x 1.941)

The recently updated modern shower room has a vanity wash hand basin with mixer tap, and electric shower, grey heated towel radiator, tiled walls and a uPVC double glazed window to the rear aspect.

Gardens

To the front of the house there is a mature garden with lawn and a variety of shrubs, plants, the garden has a low-level brick wall boundary and wrought iron gate.

To the side of the house there is an extensive lawn garden with mature shrubs/plants and pathway leading to the rear garden, a low-level brick wall forms the boundaries.

Tel: 01482 877177

To the rear of the house there is a generous sized lawn garden, with a range of mature shrubs, plants and flowers, trees, raised seating areas, and the garden has a pathway leading to the detached garage, high level timber fence boundaries and gate for access.

Garage

The detached garage has up/over door, and side access via a uPVC door. There is additional parking to the front of the garage, with private drive.

Disclaimer

Whitakers Estate Agents for themselves and for the lessors of the property, whose agents they are give notice that these particulars are produced in good faith, are set out as a general guide only & do not constitute any part of a contract. No person in the employ of Whitakers Estate Agents has any authority to make or give any representation or warranty in relation to this property.

Agents Notes

Services, fittings & equipment referred to in these sale particulars have not been tested (unless otherwise stated) and no warranty can be given as

to their condition. Please note that all measurements are approximate and for general guidance purposes only.

Valuations

We offer a free sales valuation service, as an independent company we have a strong interest in making sure you achieve a quick sale. If you need advice on any aspect of buying or selling, please do not hesitate to ask

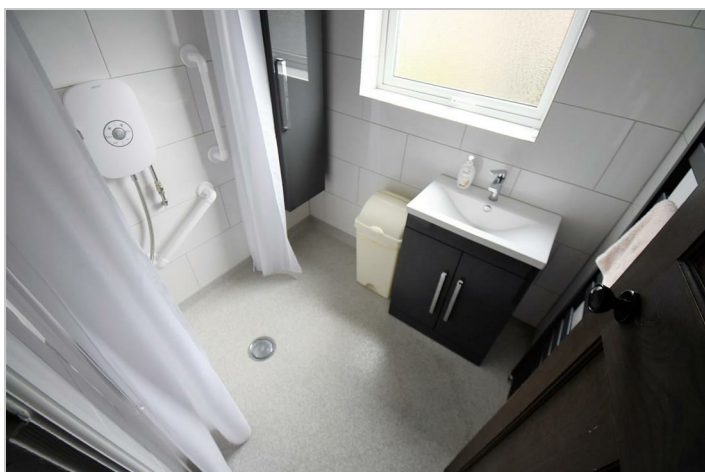
Council Tax

Band C

The local authority is Hull City Council

Tenure

Freehold



Road Map



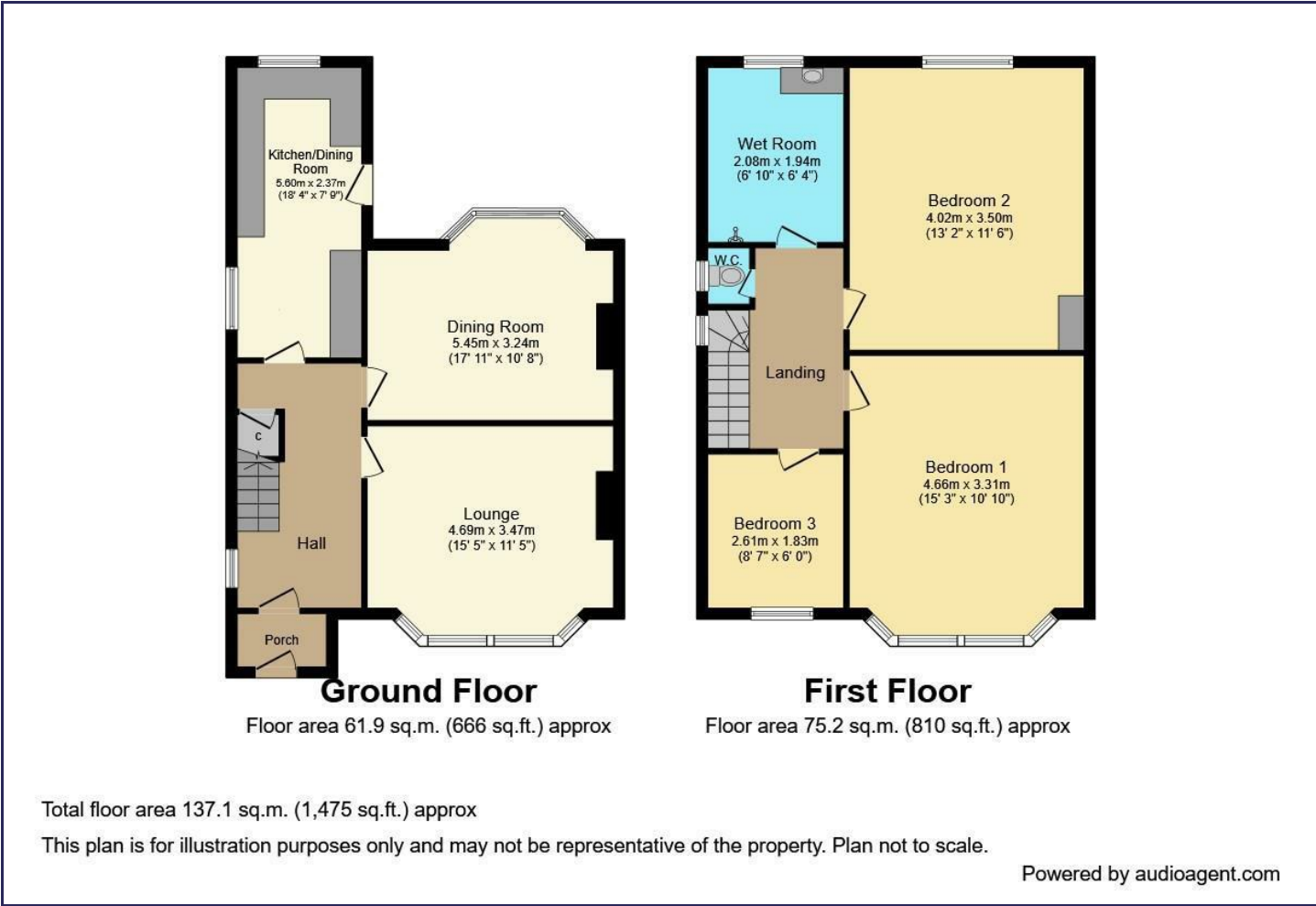
Hybrid Map



Terrain Map



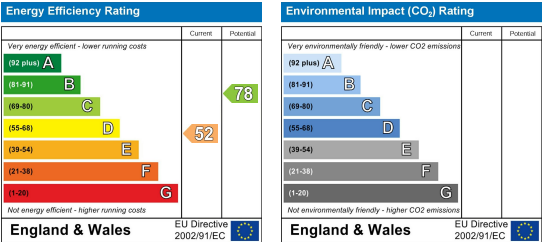
Floor Plan



Viewing

Please contact our Whitakers Estate Agents - Sutton Office Office on 01482 877177 if you wish to arrange a viewing appointment for this property or require further information.

Energy Efficiency Graph



These particulars, whilst believed to be accurate are set out as a general outline only for guidance and do not constitute any part of an offer or contract. Intending purchasers should not rely on them as statements of representation of fact, but must satisfy themselves by inspection or otherwise as to their accuracy. No person in this firms employment has the authority to make or give any representation or warranty in respect of the property.